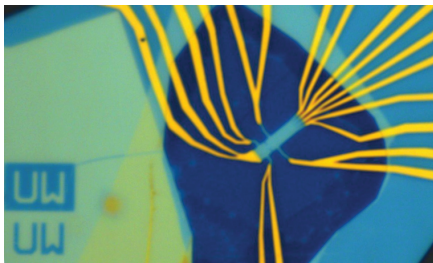


# MATERIALS SCIENCE & ENGINEERING

MATERIALS SCIENTISTS AND ENGINEERS MAKE ALL ENGINEERING APPLICATIONS POSSIBLE.



## QUICK FACTS

Graduate students join MSE from a variety of engineering and physical science backgrounds such as chemistry and physics.

MSE students pursue internships and careers in:

- > Academia
- > Air and space
- > Computing, data and digital technologies
- > Environment, sustainability and energy
- > Health and medicine
- > Infrastructure, transportation and society
- > Robotics and manufacturing

## IS MSE RIGHT FOR ME?

UW MSE offers both Ph.D. and master's degree programs. Several students have successfully joined the Ph.D. program after completing the master's program. Additional training is available in clean energy, quantum materials, and data science.

**The Ph.D. program** is for students interested in academia, research and technique innovation careers. It provides students with the skills to conduct advanced research in development and applications of novel and new materials. Doctoral students conduct research under the supervision of each individual faculty supervisor.

**The applied master's program** is for students interested in pursuing a practice-oriented degree involving research project or internship with industry that culminates in a career in materials science and engineering or an advanced research degree in preparation for a Ph.D. The program is flexible, can be completed in as little as one year, or can be extended as most appropriate for the individual and their schedule.

## HOW DO I APPLY?



MSE.UW.EDU

Priority application deadlines for autumn quarter entry:

**Ph.D. Program: January 6**

**Applied Master's Program: March 15**

The application and instructions are available on our website.

## HOW CAN I LEARN MORE?

Contact or schedule an appointment with Karen Wetterhahn, Graduate Program Advisor: [karenlw@uw.edu](mailto:karenlw@uw.edu), 206-543-2740, [karenlw.youcanbook.me](https://karenlw.youcanbook.me)